

Calasept® Endoline

By DIRECTA

Directa's products are developed and evaluated by our selected team of highly-qualified and renowned Swedish and international dentists with the aim of making life easier for the dentist in his daily clinical work.



DIRECTA
directadental.com



Calasept® Endoline effective treatment of root canals

Calasept is a well known brand of products from calcium hydroxide paste for temporary root fillings to a complete assortment of liquids for effective irrigation of root canals. It is a useful range of products for the proper treatment of root canals by any clinic, general practitioners and endodontic specialists.

Current products include Calasept and Calasept Plus calcium hydroxide paste, Calasept EDTA solution for chelation of root canals, Calasept Sodium Hypochlorite for the irrigation and debridement of the canals and Calasept CHX, a chlorhexidine for the final rinse of the canal. Our high quality Calasept Paste Needles and Double-Side-Vented Needles optimize the application and delivery of all Calasept products.

Our dedicated goal on the development and production of Calasept products has made the Calasept brand a reliable line where the prime focus is to facilitate and simplify the root canal treatment with innovative solutions for the dental practitioner.



Calasept® Endoline

Irrigation Solution

Disinfecting solution for different endodontic treatments.

Calasept® Sodium
Calasept® EDTA
Calasept® CHX

page: 4-9

page: 4-5
page: 6-7
page: 8-9

Irrigation Accessories

Luer lock syringes for irrigation and luer lock irrigation needles.

Irrigation Syringes
Calasept Irrigation Needles

page: 10-11

page: 10
page: 11

Calcium Hydroxide

Pure calcium hydroxide. High concentration of calcium hydroxid >41% giving a high concentration and release of hydroxyl ions.

Calasept®
Calasept® Plus

page: 12-17

page: 12-13
page: 14-15

Temporary Filling

Self curing paste for a reliable closing of the cavity.

Calasept® Temp

page: 18-19

page: 18-19

reasons to use Calasept® Sodium Hypochlorite

Reliable endodontic irrigation

Effective against pathogenic organisms and pulp digestion. It is an excellent choice to optimize successful debridement during instrumentation thanks to its efficiency against pathogenic organisms and pulp digestion.

For irrigation and debridement of root canals

Calasept Sodium Hypochlorite is used for the irrigation and debridement of root canals during endodontic treatment.

Antimicrobial and tissue dissolving

Calasept Sodium is most reliable to your endodontic irrigation due to its antimicrobial and tissue dissolving activity. Available in 3% and 6% solutions for a wider selection.

Disinfecting solution

Used for irrigation and debridement of root canals and removal of smear layer and inorganic substances. Optimizes debridement during instrumentation.



Calasept® Sodium Hypochlorite disinfecting solution for endodontic irrigation during root canal treatment

Prod No: 1290300 Calasept Sodium Hypochlorite 3%, 500 ml
Prod No: 1290600 Calasept Sodium Hypochlorite 6%, 500 ml

Calasept Sodium Hypochlorite is used for the irrigation and debridement of root canals during endodontic treatment. Calasept Sodium Hypochlorite is most reliable to your endodontic irrigation due to its antimicrobial and tissue dissolving activity. It is an excellent choice to optimize successful debridement during instrumentation thanks to its efficiency against pathogenic organisms and pulp digestion.

Indications:

Irrigation and debridement of root canals
Optimizes debridement during instrumentation
Removal of smear layer and inorganic substances

4

reasons to use Calasept® EDTA

Minimizes file fractures

Calasept EDTA has a Lubricating capacity.

Increased adhesion to filling materials

Removes smear layer. The EDTA forms a water soluble chelate complex that decalcifies substances and dissolves smear layers, thereby increasing the adhesion of filling material.

Easily flushed from the canal system

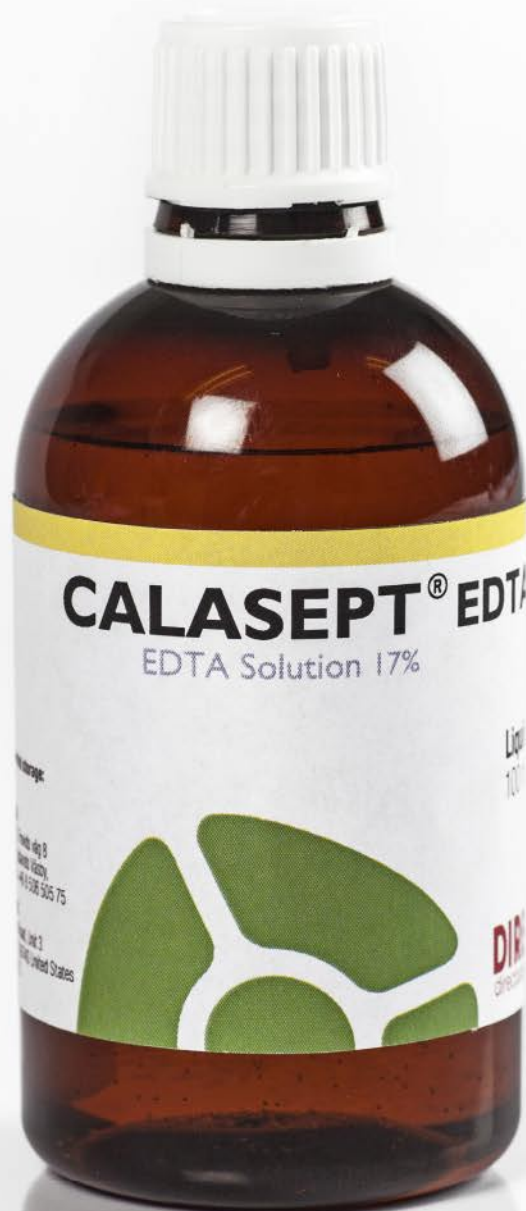
EDTA helps to enlarge and shape the canal for final obturation.

Easy filling of syringe

The bottle neck with insert simplifies the filling of syringe.

Adaptor for easy
filling of syringe





Calasept® EDTA **irrigation agent for root canal walls** **chelating and smear layer removal**

Prod No: 1260100 Calasept EDTA, 100 ml

Calasept EDTA is specially formulated to aid in the negotiation of root canals by endodontic instruments. The EDTA forms a water soluble chelate complex that decalcifies substances and dissolves smear layers, thereby increasing the adhesion of filling material. EDTA helps to enlarge and shape the canal for final obturation.

Rinse the root canal thoroughly after use of EDTA. Calasept CHX is recommended for final rinsing.

4

reasons to use Calasept® CHX

Inhibitory capacity

Inhibits the growth of bacteria in root
canals and dentin tubules.

Final rinsing

Calasept CHX is recommended to use for
final rinsing of the root canal after use of EDTA.

Removing bacteria

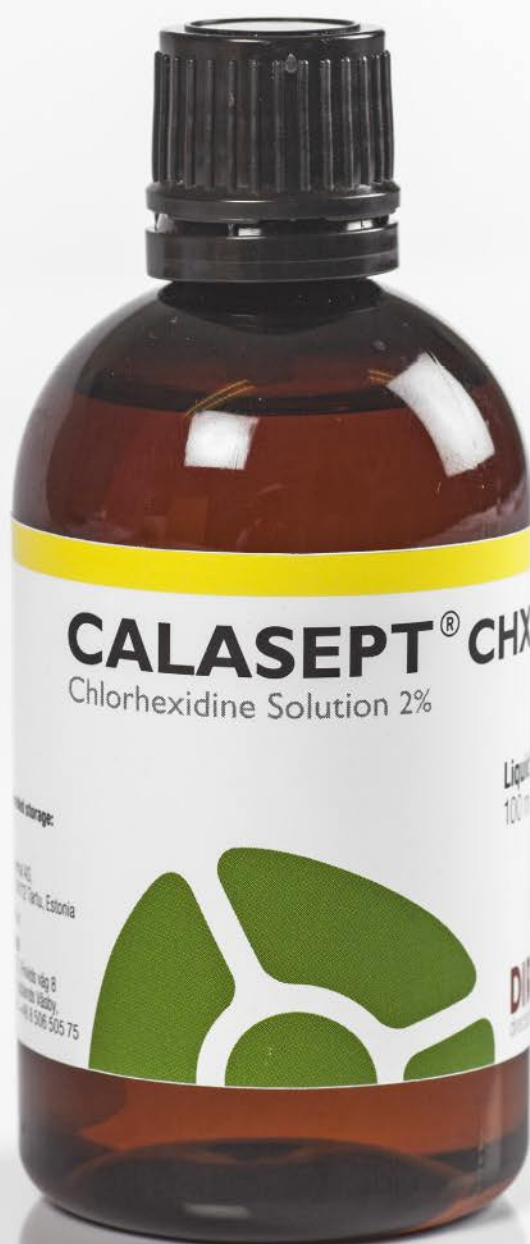
Treatment using CHX 2% prior filling of
the root canal material is more effective
in removing bacteria.

Easy filling of syringe

The bottle neck with insert simplifies
the filling of syringe.

Adaptor for easy
filling of syringe





Calasept® CHX for irrigation during endodontic treatment

Prod No: 1270100 Calasept CHX, 100 ml

Calasept CHX 2% solution is bactericidal. During endodontic treatment, EDTA and Sodium Hypochlorite are used intermittently. In vitro studies have established that the chelating effect of EDTA is not limited by using sodium hypochlorite. Therefore irrigation with Calasept CHX solution prior to filling a canal with root filling material is recommended. In addition, the bactericidal capacity of Calasept CHX will reduce the amount of bacteria.

*NaClO and CHX should not be mixed due to that an unwanted precipitate may occur.



Irrigation Syringes

Prod No: 1210000 Irrigation Syringes, 20 pcs, 10 White & 10 Green

Luer lock syringes for irrigation in high quality, single use, 3 ml luer lock syringes. Colour-coded to eliminate the risk to mix up the irrigation liquids.

Features:
High quality 3-part syringe
3 ml
Luer Lock
Colour-coded



Calasept® Irrigation Needles double side vent for efficient irrigation during root canal therapy

Prod No: 1201600 Calasept Irrigation Needle, Grey, 40 pcs needles, Container packed 27G

Prod No: 1201610 Calasept Irrigation Needle, Violet, 40 pcs needles, Container packed 31G

With this high quality, double side vented, luer lock irrigation needle, you can be sure to get an effective and safe irrigation when performing an endo treatment. Easy and optimized to clean out the canals with the double side openings, creating a "swirl-effect". Safe with the rounded and closed tip, protecting apex.

Features:

- With luer lock hub
- Double side vented
- Bendable
- High quality stainless steel
- Sterile and disposable
- Easy use for cleaning out the canals
- Container packed

4

reasons to use **Calasept®** Calcium Hydroxide

Long-lasting and very effective

The very high concentration of >41% in combination with optimal calcium ion release generates the extremely efficient and long-lasting antimicrobial effect.

Direct, quick and easy application

Calasept is a ready-to-use paste in air tight syringes for direct application through the sterilized needles. The air tight syringes eliminate the risk of incorporating air into calcium hydroxide turning the material into calcium carbonate.

Optimal calcium release

Pure calcium hydroxide. High concentration of calcium hydroxide means long-lasting because the paste can release calcium ions for a long time.

Five indications- only one product

Can be used for temporary root-filling, pulp capping, pulp protection, insulation in deep cavities and for stepwise excavation.





Calasept® Calcium Hydroxide

Prod No: 1230200 Calasept 2U, 2 syringes à 1,5 ml + 10 pcs Calasept Paste Needle
Prod No: 1230100 Calasept 4U, 4 syringes à 1,5 ml + 20 pcs Calasept Paste Needle
Prod No: 1231100 Calasept Paste Needle, 100 pcs
Prod No: 690141 Grip Plate, 10 pcs

Calasept has a very high content of calcium hydroxide (> 41%) giving a high concentration of hydroxyl ions. These generate the high PH value of 12.4 which has a pronounced antimicrobial effect. High concentration of calcium hydroxide means long-lasting because the paste can release calcium ions for a long time. Calasept is a ready-to-use paste in air tight syringes for direct application through the sterilized needles.

Composition:
Calcium hydroxide >41%
Barium sulphate
Sterile isotonic saline solution
pH 12.4

4

reasons to use Calasept® Plus Calcium Hydroxide

Long-lasting and very effective

The very high concentration of >41% in combination with optimal calcium ion release generates the extremely efficient and long-lasting antimicrobial effect.

Smoother consistency

The new production process gives Calasept Plus a consistency that allows calcium hydroxide to be applied using a small and flexible plastic needle, Flexi-Tip.

Precise and deep application with Flexi-Tip

The autoclavable Flexi-Tip in combination with the smooth consistency is time saving and allows precise and deep application.

Five indications - only one product

With its multi purpose Calasept Plus can be used for Temporary root-filling, Pulp capping, Pulp protection, Insulation in deep cavities and for stepwise excavation.





Calasept® Plus Calcium Hydroxide

Prod No: 124001 Calasept Plus Disposable, 3 Syringes à 0,4 ml + 3pcs Calasept Flexi-Tips
Prod No: 1240000 Calasept Plus 1U, 1 syringe à 1,5 ml + 5 pcs Calasept Plus Flexi-Tips
Prod No: 1240100 Calasept Plus 4U, 4 syringes à 1,5 ml + 20 pcs Calasept Plus Flexi-Tips
Prod No: 1241100 Calasept Plus Flexi-Tip, 100 pcs
Prod No: 690141 Grip Plate, 10 pcs

The consistency of new Calasept Plus allows calcium hydroxide to be applied using a small and flexible plastic needle, Flexi-Tip. The autoclavable Flexi-Tip in combination with the smooth consistency is time saving and helps for precise and deep application.

Composition:
Calcium hydroxide >41%
Barium sulphate
Sterile isotonic saline solution
pH 12.4

Calasept® & Calasept® Plus

Calasept Plus & Calasept are pure calcium hydroxides. The very high concentration of >41% in combination with optimal calcium ion release generates the extremely efficient and long-lasting antimicrobial effect. Calasept Plus & Calasept are radio-opaque.

Calasept is a ready-to-use paste in air tight syringe for direct application through the Paste Needle or Flexi-Tip.

The air tight syringes eliminate the risk of incorporating air into calcium hydroxide turning the material into calcium carbonate. Calcium carbonate is not possible to re-wet into calcium hydroxide.

INDICATIONS

Temporary root-filling
Pulp capping
Pulp protection
Insulation in deep cavities
Stepwise excavation

DID YOU KNOW?

Calasept has a bactericidal effect on carious dentine.

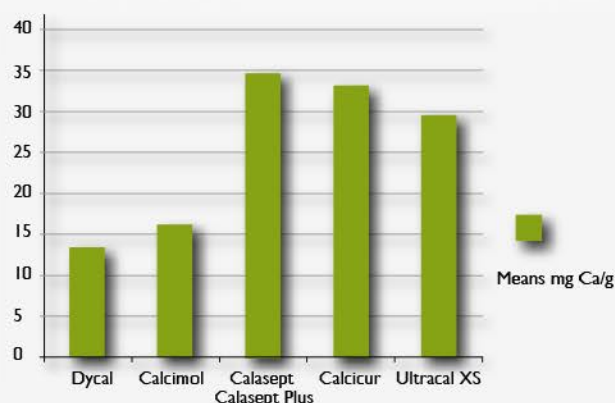
Calasept creates a defensive response promoting formation of hard tissue barriers.

Calasept stored in the refrigerator will not prolong shelf-life, only make the consistency thicker.



TEST:

Determination of release of calcium ions by atomic absorption.



Conclusions

A significant difference in release of calcium ions was observed between setting and pure materials. Calasept showed the highest quantity of calcium release. The values were obtained after 7 days, crucial time when closing a pulp, the values can vary due to draining of molecule content in this study.

Dr. Prof. Paz Alejandro
University J F Kennedy Argentina, University la Plata.

Argentina 2007/2008

Temporary root-filling

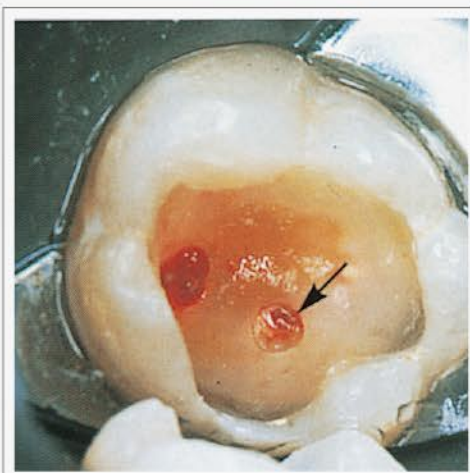


The radiograph of 35 with periapical osteitis.



3 months later the periapical radiolucency has been replaced with new bone promoted by the Calasept.

Pulp capping

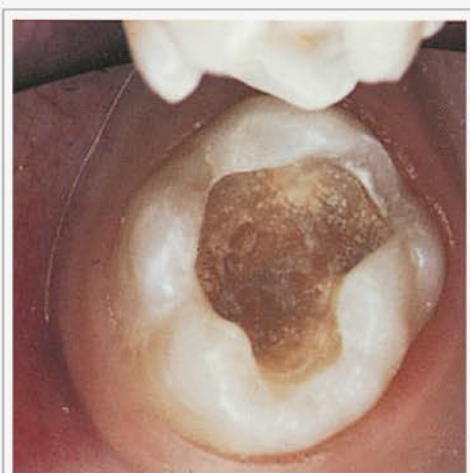


Two cavities after pulpotomy of two small lesions, showing haemostasis in the mesial, first prepared cavity (arrow) and cessation of bleeding in the distal cavity.



Appearance of hard-tissue barrier 3 months after pulpotomy.

Stepwise excavation



After gross excavation, the deepest layer of carious dentine will be covered with Calasept.



After 6 weeks the cement was removed, Calasept washed away and the excavation of the carious dentin completed without pulp exposure.

4

reasons to use Calasept® Temp

Rapid self curing in the cavity

Calasept Temp is a temporary filling material consisting of zinc oxide, glycerine and calcium sulphate - hemihydrate. The material is rapidly self curing in the cavity having a high adhesion to dentin.

High adhesion to dentin

Quickly sets in the cavity, providing a tight seal. High resistance to chewing pressure.

Outstanding marginal seal

Calasept Temp guarantees an outstanding marginal seal due to its slight expansion.

Excellent adaptability

The material is pre-mixed and is simple to apply and to remove. Excellent resistance to chewing pressure. No irritation to the pulpa nor the gingiva.





Calasept® Temp self curing paste for a reliable closing of the cavity

Prod No: 1280000 Calasept Temp, 3 x 30 gram

Calasept Temp is a temporary filling that is ready to use and requires no mixing. The material is rapidly self curing in the cavity and has a high adhesion to dentin. This together with the resistance against chewing-pressure gives a very reliable closing of the cavity.

Compositions:

Zink oxide: 15%

Glycerine: 20%

Calcium sulphate – hemihydrate: 50%



"The original!"

CALASEPT®
Calcium Hydroxide

Design By Dentists™

Directa's products are developed and evaluated by our selected team of highly-qualified and renowned Swedish and international dental professionals with the aim of making life easier for the dental professionals in the daily clinical work.

DIRECTA
directadental.com

DIRECTA AB
P.O. Box 723,
194 27 Upplands Väsby, SWEDEN
+46 8 506 505 75

DIRECTA INC
64 Barnabas Road, Unit 3
Newtown, CT 06470, United States
203.491.2273

DIRECTA GERMANY
Hammergutstr. 11
92245 Kümmersbruck, GERMANY

info@directadental.com
www.directadental.com
www.directadentalgroup.com
www.facebook.com/directadentalgroup
www.instagram.com/directadentalgroup
www.twitter.com/D_DentalGroup
www.youtube.com/user/DirectaAB

DirectaDentalGroup

DIRECTA **topdental** **ORSING** **parkell**

2017-04